

## Fits Applications of Any Size

ReportWorX.NET is available in three different versions:

1. **ReportWorX.NET Lite** is well-suited for stand-alone applications, requires fewer resources and is the least expensive product. Supports two simultaneous reports and 10 report templates.
2. **ReportWorX.NET Standard** is ideally suited for mid-tier, site-wide applications requiring a powerful Web interface and remote connectivity. Supports 10 simultaneous reports and 100 report templates.
3. **ReportWorX.NET Enterprise** is designed for corporate-wide applications addressing enterprise-level reporting needs. Unlimited concurrent reports and unlimited templates.

## ReportWorX.NET Trial Demonstration Version

ReportWorX.NET will run without any product licensing for two hours. The limitation of this trial version is the same as the ReportWorX.NET Lite version, except the demonstration version also allows you to sample the powerful Web interface.

### Hardware Requirements

#### ReportWorX.NET – Lite Hardware Requirements

- Microsoft Windows 2000 Workstation or Server, Windows XP Professional, or Windows 2003 Server
- MSDE 2000 or Microsoft SQL Server 2000
- Pentium III CPU - 600 MHz or greater
- 256 MB of RAM
- Microsoft Excel 2000 or Microsoft Excel XP

#### ReportWorX.NET – Standard Hardware Requirements

- Microsoft Windows 2000 Workstation or Server, Windows XP Professional, or Windows 2003 Server
- MSDE 2000 or Microsoft SQL Server 2000
- Pentium 4 CPU - 1.8 GHz or greater
- 512 MB of RAM
- Microsoft Excel 2000 or Microsoft Excel XP

#### ReportWorX.NET – Enterprise Hardware Requirements

- Microsoft Windows 2000 Workstation or Server, Windows XP Professional, or Windows 2003 Server
- MSDE 2000 or Microsoft SQL Server 2000
- Pentium 4 CPU - 2.0 GHz or greater
- 1 GB of RAM
- Microsoft Excel 2000 or Microsoft Excel XP



## Based on Microsoft .NET Web Services

**ReportWorX.NET** uses Microsoft's newest Web Services technology to deliver Web-based information to any Internet Browser. ReportWorX.NET can data mine any Web services-enabled database to integrate real-time and corporate business data to meet the most demanding reporting needs.

## Web-Enable Your Reports

Reports can be automatically published to Web servers so that any user can access reports using Internet Explorer over the Internet or within a secure corporate intranet. Reports are converted to Web forms, and a Web-based navigation system is automatically created to allow the easy management of archived reports.

## Web-Based Report Management

A powerful Enterprise Web-based navigation and management system is optionally available, providing users with the ability to review archived reports that have been published on a Web server as well as manage report execution and schedules. This feature is ideally suited for remote report management.

Visualize Reports - Microsoft Internet Explorer

Address http://localhost/ReportWorXWebApp/visualizereports.aspx

Visualize Manage Execute Help iconics REPORTWORX.net

### VISUALIZE REPORTS

PCNAME\Administrator

Filter Type: Show all reports (no filtering)

Time Range: Last Week

From: May 22, 2003 10:40:07 AM

To: May 29, 2003 10:40:07 AM

#### My Reports

User	Report Name	Description	Execution Time
MELISSA\Administrator	<a href="#">My Report</a>	This is a sample report.	5/29/2003 10:37:05 AM
MELISSA\Administrator	My Report	This is a sample report.	5/28/2003 11:57:22 PM

Page 1

#### Sample Reports

*Visualize Reports Over the Web Interface*



## Scaleable Architecture

**ReportWorX.NET** is completely based on Microsoft.NET and is designed to scale from the simplest, single report applications to the most demanding reporting applications. Create and deploy a few reports that run simultaneously on a single CPU server, or deploy your applications for an entire enterprise running on multiprocessor servers. **ReportWorX.NET** takes full advantage of Symmetric Multiprocessing and IT Server and Web infrastructures.

## Totally Complete and Integrated Solution

**ReportWorX.NET** is tailored to fit your overall system design and requirements and can be integrated with ICONICS HMI SCADA products or any other third-party HMI, SCADA, Control, MES or Visual Basic application. Numerous features in ReportWorX.NET integrate seamlessly with any IT infrastructure. Event logging, native performance monitoring and the integrated ICONICS TraceWorX™32 product provide easy-to-use tools for analysis, debugging and performance optimization.

## Report Redirector Technology

Reports can be automatically archived, sent to redundant printers, e-mailed to a selected list of recipients or to your entire organization, converted to a PDF file, faxed, printed to multiple printers, e-mailed, or published to a Web Server for use on the Internet or corporate intranets.

## Time-Saving Configuration Capabilities

Reports can be quickly configured using an intuitive server-based configuration tool, featuring powerful reusable report templates, report triggers, user/role management and automatic report directory management, including periodic archiving of your report files!

## International Language Switching

If your organization requires reports in different languages, **ReportWorX.NET** includes a powerful international language capability. Reports containing text, engineering units, currency calculations and more can be indirectly referenced so that the same reports can be deployed to different individuals speaking different languages or to completely different locations in other countries.

## Automatic File and Report Archiving

**ReportWorX.NET** includes an extensive archiving capability. Based on a user-defined configuration, reports can be scheduled for automatic deletion or moved to another PC hard drive for longer-term storage. This capability is easy to set up, and it is ideal for long-term automatic unattended operation.

## Includes Popular Report Samples

The product CD includes many useful industry and financial report samples ready for immediate use. Simply install the **Report Samples** located on the Product CD, add data to the sample reports, and you're ready to run! Use the professionally designed sample reports or create your own reports using Excel. Finalizing any project with great-looking and easy-to-create reports has never been easier!



## Simple and Advanced Reports

Use Microsoft Excel as your design tool. **ReportWorX.NET** includes an installable Excel plug-in, which fits into the universally used and comfortable environment of Excel. For example, easily connect to historians and alarm files, navigate to OPC tags using universal tag browsers, and connect to virtually any database using the powerful **ICONICS Open Database Connector**. A built-in simulator and example databases are supplied to help you quickly verify your report design before it is deployed into live applications.

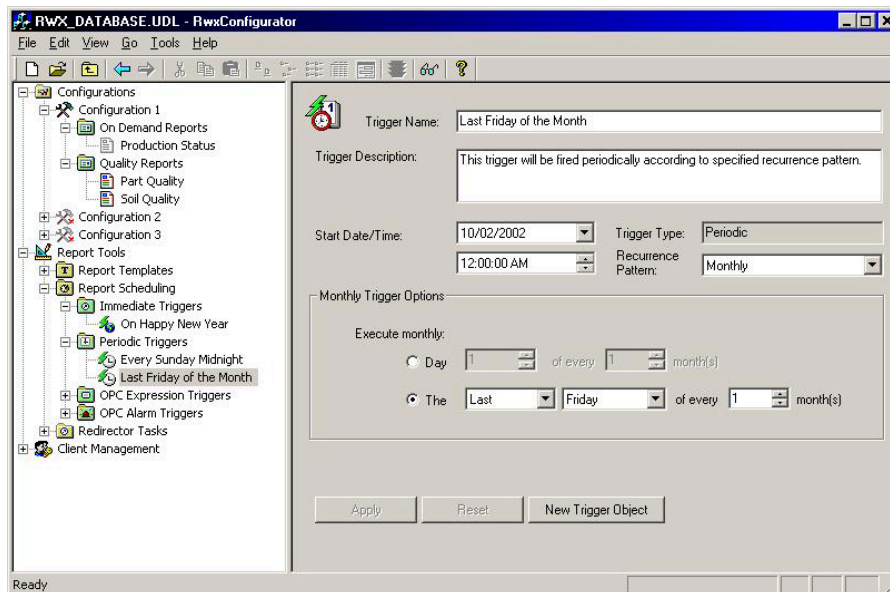
## Visualize Your Data As Never Before

We are all completely overwhelmed with vast amounts of data; **ReportWorX.NET** aggregates this information using .NET technology and turns it into visualized information and knowledge. Need to run a totalizer and create running averages or possibly calculate the percent downtime for specific running machinery, or calculate sales personnel productivity? A complete set of performance calculations is now possible, integrating real-time data and databases from different data sources.

## Powerful Report Scheduler

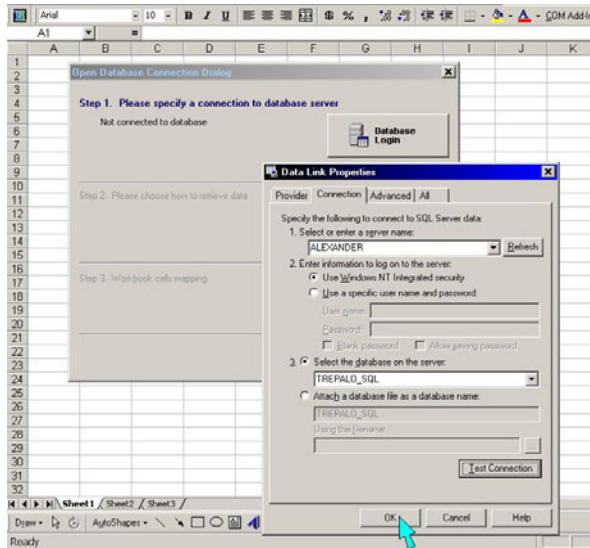
The powerful ReportWorX.NET Scheduling Engine allows for the simultaneous execution of reports. These reports can be triggered on the following criteria:

- **Manually based on direct operator commands**
- **Periodically based on time and/or date**
- **Based on alarms or events**
- **Based on real-time OPC tags**
- **Based on expressions or calculations**
- **Based on database value (contact ICONICS for details)**



*Customize Report Schedule Execution*





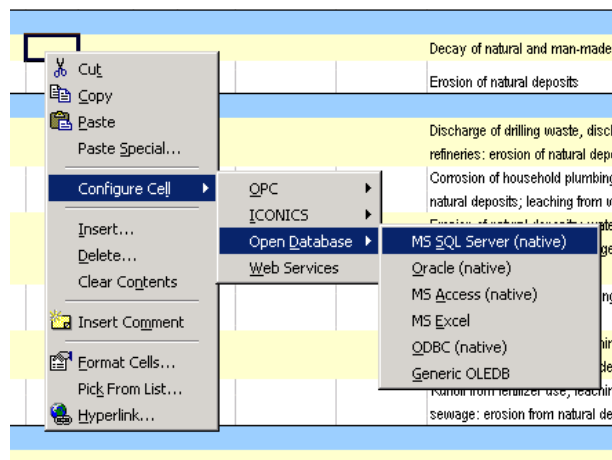
*Open Data Source Wizard Connects to Any Database*

## Use the Power of Microsoft Excel

Use Microsoft Excel as your design tool to quickly create powerful reports that connect to real-time and historical data sources, including OPC, Microsoft SQL Server, Microsoft Access, other Microsoft Excel worksheets, Oracle, Web services data from SAP, and many more custom data sources.

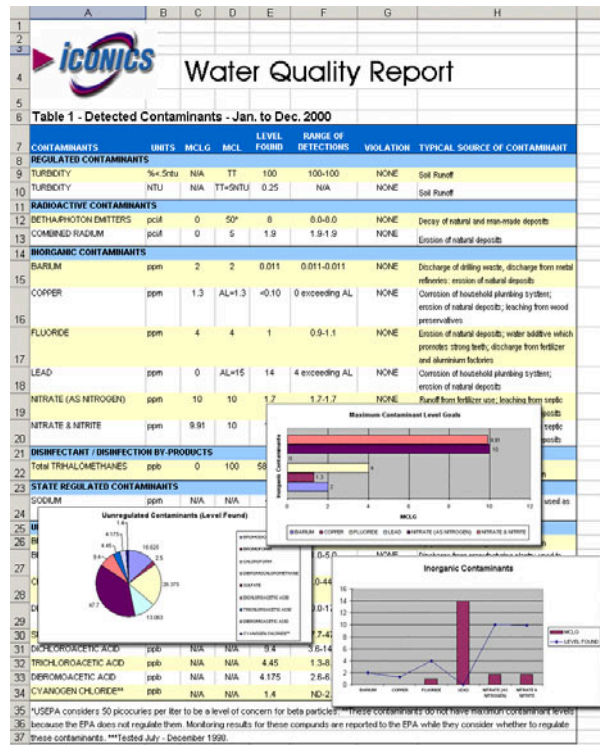
**ReportWorX.NET** is a complete reporting system that automatically manages data in Microsoft Excel Workbooks, creates Excel Workbooks, performs all the data collection from real-time and database data sources in one easy-to-configure product. Results are automatically sent (redirected) to local or remote disk drives, redundant printers, PDF files, computer screens, faxes, Web servers, or to your entire organization via e-mail.

Report results go far beyond a typical Excel plug-in. Using Microsoft COM, OLE Automation and .NET technologies, ReportWorX can seamlessly encapsulate and control the very core of Excel to create stunning reports. Harness the power of Excel's core technology to produce, schedule, connect to databases and deploy reports for any application.



*Simple-to-Use Excel Plug-in Integrates Information*





*Turn Data Into Manufacturing Intelligence*

## Open Database Connectivity

Powerful Microsoft .NET technology allows the data mining of virtually any corporate database.

**ReportWorX.NET** can integrate information from different data sources into one report. Data sources such as Microsoft SQL Server, Microsoft Access, ODBC, OLEDB, MSDE, Oracle, AspenTech, OSI PI, OPC HDA (Historical Data Access), OPC A&E (Alarm and Events) and OPC real-time information can all be accessed and combined to create custom reports. ReportWorX.NET uses Web services technology to data mine other Web services over the Internet or intranets. NSDAQ and SAP information can easily be integrated into reports. It's that easy.

## Connect to Any Data Source

This revolutionary reporting product integrates with any data source, such as Microsoft SQL Server, Microsoft Access, Oracle, SAP and any customer database using powerful data integrator technology. Integrate information from real-time OPC data sources as well as historical data sources.

**ReportWorX.NET** is optimally designed to work with the ICONICS GENESIS32™ Data Historian (TrendWorX™32), Alarm Logger / Historian (AlarmWorX™32) and DataWorX™32, the OPC real-time Data Exchange and Data Bridging product. ReportWorX.NET integrates other popular data sources and Web services, such as:

- Most HMI, SCADA, and DCS Systems
- Maintenance Systems
- MES, ERP and Plant Historians
- LAB Information Systems
- Custom Corporate Databases



---

## Announcing ICONICS' Newest Family Member - ReportWorX.NET

### Summary

Advanced reporting has never been so easy! Looking for a powerful reporting tool that is easy to learn, quick to apply and works with any data source, including popular HMI, SCADA, MES and control systems? Even connect to databases such as Microsoft® SQL Server®, Microsoft Access, Oracle®, SAP, Aspen Tech, OSI PI, and many more.

### Powerful Microsoft.NET Technology

**ReportWorX™.NET** is designed from the ground up based on Microsoft .NET and Microsoft Excel technologies, and was written in the Microsoft C# (C-Sharp), VB.NET and ADO.NET programming languages. Turning vast amounts of data from any data source into reports is fast, efficient and a snap to setup. ICONICS brings you the most advanced reporting tool available today, taking maximum advantage of Microsoft's most powerful technologies. ReportWorX.NET uses Microsoft.NET technology to push data into your report worksheets and control the execution of these Excel forms *without the need for Excel to be visible or executing!* Workbook duplication, manipulation, chart and data updates, formula recalculation and automatic print out and scheduling are completely performed by ReportWorX.NET.

### The Ideal Reporting Companion for Any Application

- **Water and Wastewater** – Quickly create EPA and government reports
- **Automotive** – Birthing information, production counts, utilization, SPC and quality reports
- **Material Handling** – Material flow rates, machine efficiency and usage reports
- **Building Controls and HVAC** – Energy usage, building efficiency and maintenance reports
- **Security** – Personnel and time reports
- **Power** – Energy usage, EPA, and maintenance reports with secure electronic signatures
- **Government** – Government regulatory reporting
- **Chemical / Oil / Gas** – Production reports, custody transfers
- **OEMs & Machine Builders** – Downtime, SPC, Six Sigma reports
- **Biotech, Food and Pharmaceuticals** – FDA 21 CFR 11, EC 178 reports

### Management Intelligence

Now you can see all your manufacturing information from a single user interface. **ReportWorX.NET** integrates with the ICONICS WebHMI™ Internet-enabled product, providing a Digital Dashboard for manufacturing and business.

### The Perfect Choice

Correlating and producing reports complements and finalizes any project. **ReportWorX.NET** is your perfect tool for creating, scheduling and directing reports to be sent to redundant printers, e-mail, computer screens, PDF files, or published to a Web server.

- ReportWorX.NET can handle any real-world reporting application.
- Powerful enough to create the most sophisticated reports but friendly and easy enough for beginners.
- Whether you need reports occasionally or daily, ReportWorX.NET is the ideal product to meet your needs.

