

**Energy Management**

This energy report is based on consumption and use from:

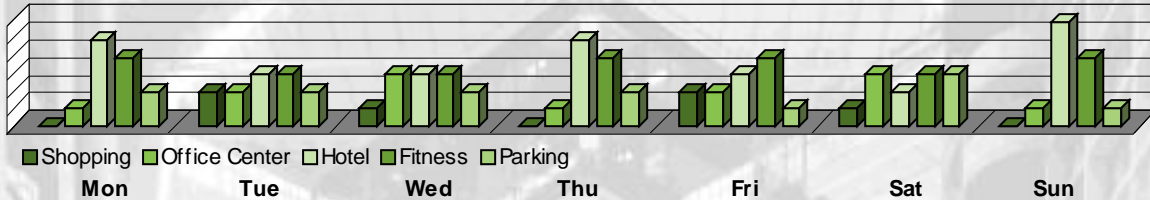
- Electrical Distribution Systems
- Energy Producing Systems
- Building Envelope
- HVAC Systems
- Lighting
- Motor and Drives
- Other energy-consuming equipment

**Electricity Consumption**

Last Hour	20 Kw h
Last Day	1105 Kw h
Current Week	6411 Kw h

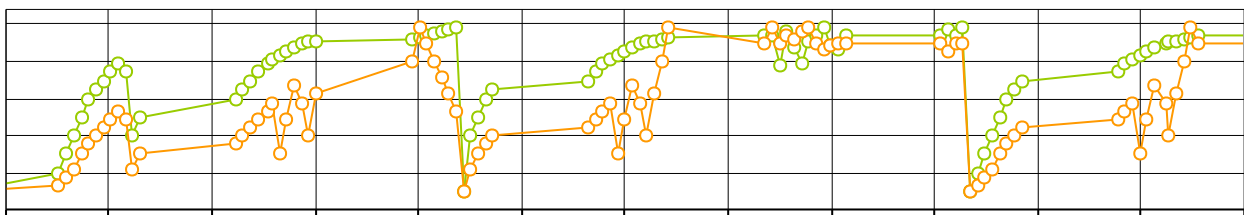
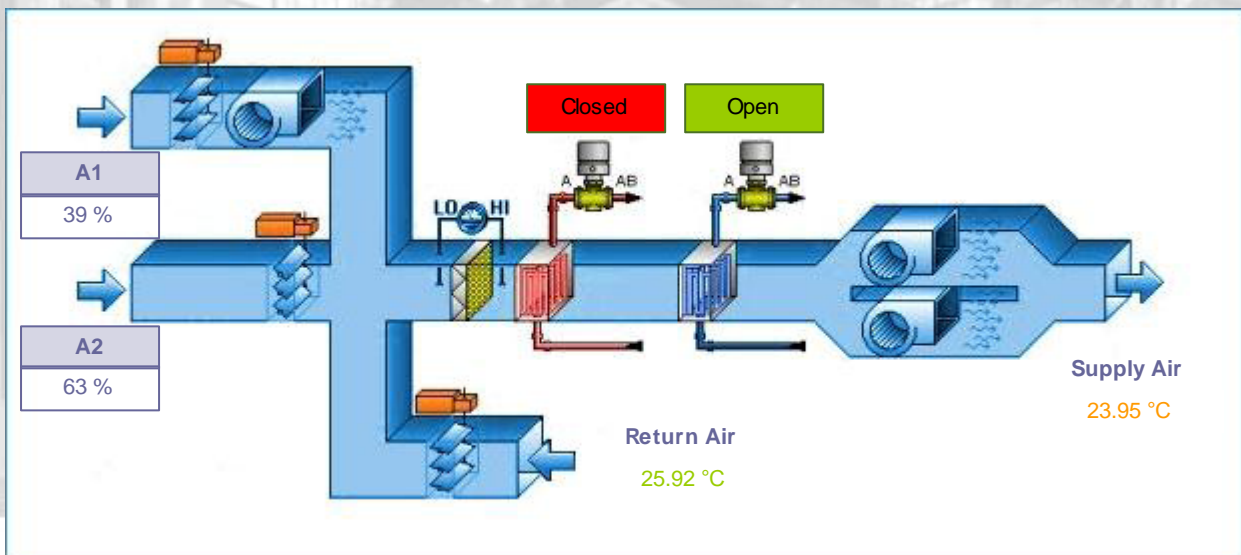
**Fuel Consumption**

Last Hour	5 Gal
Last Day	822 Gal
Current Week	4510 Gal



**HVAC System**

HVAC stands for heating, ventilation, and air conditioning. HVAC systems control the ambient environment (temperature, humidity, air flow, and air filtering).



00:00:00 14:00:00 04:00:00 18:00:00 08:00:00 22:00:00 12:00:00 02:00:00 16:00:00 06:00:00 20:00:00 10:00:00 00:00:00  
 ■ Return Air ■ Supply Air

Start Time	Ack Time	End Time	Prio	BA Alarms & Events
15/11/06 09:00:00	15/11/06 09:30:00	15/11/06 10:00:00	8	Reset all
15/11/06 10:00:00	15/11/06 10:30:00	15/11/06 11:00:00	5	Pumping Starts
15/11/06 11:00:00	15/11/06 11:30:00	15/11/06 12:00:00	5	Production Starts
15/11/06 12:00:00	15/11/06 12:30:00	15/11/06 13:00:00	8	Starts System
15/11/06 13:00:00	15/11/06 13:30:00	15/11/06 14:00:00	9	Valves Open
15/11/06 14:00:00	15/11/06 14:30:00	15/11/06 15:00:00	6	Mixer runs
15/11/06 15:00:00	15/11/06 15:30:00	15/11/06 16:00:00	8	Enter Settings Value
15/11/06 16:00:00	15/11/06 16:30:00	15/11/06 17:00:00	7	Batch can Progress
15/11/06 17:00:00	15/11/06 17:30:00	15/11/06 18:00:00	6	Motor Runs
15/11/06 18:00:00	15/11/06 18:30:00	15/11/06 19:00:00	5	Timer in Progress